

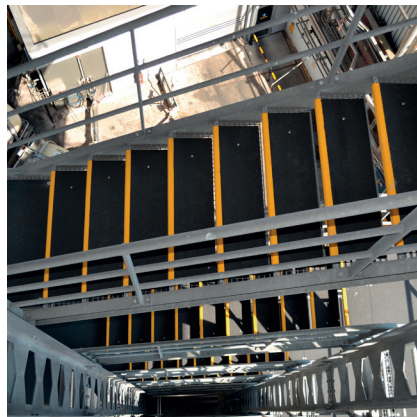
## INSTALLATION INSTRUCTIONS

### GripFactory PolyGrip Productrange

Welcome as a GripFactory customer. To ensure that the PolyGrip anti-slip products are correctly applied and assembled, we recommend that you carefully read the information below.

**All mounting methods and products described in this document have been extensively tested and applied in practice. GripFactory can not be held liable for any problems with the application. All application is at your own risk.**

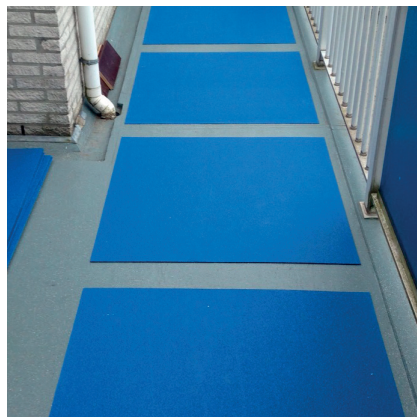
Products from the GripFactory PolyGrip range can be mounted on various surfaces. In this manual we provide an as comprehensive as possible overview of the steps you need to take for an optimal and sustainable end result.



MOUNTING ON STAIRS



MOUNTING ON WOOD



MOUNTING ON CONCRETE



MOUNTING ON STEEL

GripFactory B.V.

Trasmolenlaan 12  
3447 GZ Woerden  
The Netherlands

+31 (0)348 - 20 30 00

info@gripfactory.nl

www.gripfactoryantislip.com

## 1. BEFORE YOU START

Please note that the PolyGrip product is suitable for the surface. Polygrip products from GripFactory can be mounted on, among other things, wood, concrete, metal and grid (s) / stairs. If in doubt you can of course always contact our Service Desk

The correct protective equipment must be worn when sawing and installing the PolyGrip products. For example gloves, goggles, dust mask, safety shoes and a suitable overall.



Make sure that the surface on which you want to apply the PolyGrip products is clean, dry and free from grease, moss, mold, etc. so that no reaction is caused between the substrate (the kit) and the PolyGrip product.

All loose and damaged areas must be repaired until the area to be applied to is flat.

### REMARKS:

Small differences in height can be overcome by using more kit where necessary.

If it is determined that the wood has rotten spots, this must be replaced. Where concrete repair is needed, it must be repaired with the correct repair tools to guarantee a correct connection.

Before gluing, first lay down the PolyGrip products to ensure that it fits evenly.

It is advisable to first perform an adhesion test on every surface.

## 2. SAWING

GripFactory supplies the PolyGrip products to size if required, but sometimes it is necessary to saw on location to get a good fit. The cutting must be carried out in a safe environment.

We recommend keeping the smooth side up when cutting. The sawing can be carried out with an angle grinder provided with a suitable disc (preferably with diamond) or a jigsaw provided with a tile or metal saw. If you foresee that many sawing operations must be performed, then we advise you to use our sawing service or to use a water-cooled saw with a diamond blade.

The PolyGrip materials are made of fiberglass-reinforced polyester and finished with an aluminum oxide grade. Wear of your saw blade will occur quickly due to the hardness of the product.

## 3. WASTE

You must ensure that waste is processed correctly. Check the product packaging for more information or contact the GripFactory Service Desk.

## 4. MOUNTING ON STAIRS



### 4.1. PolyGrip Ladder Rungs

We recommend that PolyGrip Ladder Rungs are installed with a polyurethane-based kit such as PURFLEX or PU473 available at GripFactory.

#### Tools:

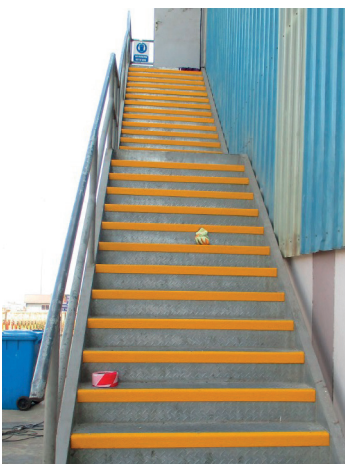
- Kit syringe
- Cotton cloth
- Remover 16 Spray / degreaser (approx. 150 m<sup>1</sup> per 500 ml)
- PURFLEX (approx. 15 m<sup>1</sup> per 310 ml), or
- PU473 kit (approx. 30 m<sup>1</sup> per 600 ml)

**Step 1:** Degrease the surface.

**Step 2:** Apply a creasing kit to the inside of the PolyGrip Ladder Rung.

**Step 3:** Position the PolyGrip Ladder Rung on the step and press it lightly.

The kit can be lightly loaded after approximately four hours and is fully accessible after twelve hours.



### 4.2. PolyGrip Stair Nosings

We recommend to attach PolyGrip Stair Nosings with a polyurethane-based kit, such as PURFLEX or PU473 available at GripFactory.

#### Tools:

- Kit syringe
- Cotton cloth
- Remover 16 Spray / degreaser (approx. 150 m<sup>1</sup> per 500 ml)
- PURFLEX (approx. 15 m<sup>1</sup> per 310 ml), or
- PU473 kit (approx. 30 m<sup>1</sup> per 600 ml)
- RVS Parkers 3.5 mm x 30 (optional)
- Drilling tool / Screwdriver (optional)

Where possible it is advisable to allow the PolyGrip Stair Nosings to acclimatize to the weather conditions prior to application.

**Step 1:** Degrease the surface.

**Step 2:** Apply a crease kit to the inside of the PolyGrip Stair Nosing.

**Step 3:** Position the PolyGrip Stair Nosing on the step and press it lightly.

**Step 4:** You can choose to fix the PolyGrip Stair Nosings with additional screws if required.

The screws should not be tightened too tightly to prevent the Polygrip Stair Nosings from bulging. The drill holes must be larger than the diameter of the screw to accommodate the working of the wood.

When the PolyGrip Stair Nosings are pre-drilled, it is wise to do this on the smooth side. When using screws or bolts it is advisable to start drilling at least 45 mm from the side and in every corner, subsequently along the edges where possible.

If multiple PolyGrip Stair Nosings need to be pre-drilled at the same place, it is advisable to create and use a template, so all drill holes will be covered. This will ensure a uniform appearance that is visually desirable on long straight sections.

The kit can be lightly loaded after approximately four hours and is fully accessible after twelve hours.



### 4.3. PolyGrip Stair Treads

We recommend to attach PolyGrip Stair Treads to grid plates with grid clamps and a polyurethane-based kit such as PURFLEX or PU473 available at GripFactory. Kits and / or screws only are sufficient on other surfaces.

#### Tools:

- Kit syringe
- Cotton cloth
- Remover 16 Spray / degreaser (approx. 7,5 m<sup>2</sup> per 500 ml)
- PU473 kit (approx. 1000 ml/m<sup>2</sup>)
- PUP60 primer (approx. 300 gram/m<sup>2</sup>) if mounted on wood
- RVS Parkers 3.5 mm x 30 (if applicable)
- Drilling tool / Screwdriver (if applicable)
- Grid clamps (if applicable)

Where possible, it is advisable to allow the PolyGrip Stair Treads to acclimatize to the weather conditions prior to application.

TIP: If mounting on wood, we recommend the use of the primer. See also the description of PolyGrip Strips / Plates (chapter 4).

**Step 1:** Degrease the surface.

**Step 2:** Drill holes in the PolyGrip Stair Treads for the grid clamps or stainless steel parkers.

If multiple PolyGrip Stair Treads need to be pre-drilled at the same place, it is advisable to create and use a template, so all drill holes will be covered. This will ensure a uniform appearance that is visually desirable on long straight sections. We recommend that you drill the holes from the smooth (inside) and start drilling at least 45 mm from the side and at any corner, subsequently along the edges where possible.

**Step 3:** For extra strength, you can apply a crease kit in the nose of the PolyGrip Stair Tread. This also prevents tolerance between the step and the PolyGrip Stair Tread.

**Step 4:** Position the PolyGrip Stair Tread on the step and press it lightly.

**Step 5:** Fit the grid clamps and tighten them.

The kit can be lightly loaded after approximately four hours and is fully accessible after twelve hours.

## 5. MOUNTING ON WOOD



We recommend to fix PolyGrip Strips / Plates on wood with a kit based on polyurethane, such as PU473 and primer available at GripFactory.

### Tools:

- Kit syringe
- Cotton cloth
- Rubber hammer
- Paint tray
- Block brush
- Wire brush
- Industrial vacuum cleaner (optional)
- Remover 16 Spray / degreaser (approx. 7,5 m<sup>2</sup> per 500 ml)
- PU473 kit (approx. 1000 ml/m<sup>2</sup>)
- PUP60 primer (approx. 300 gram/m<sup>2</sup>)

Where possible, it is advisable to have the PolyGrip Strips / Plates acclimatized to the weather conditions prior to application.

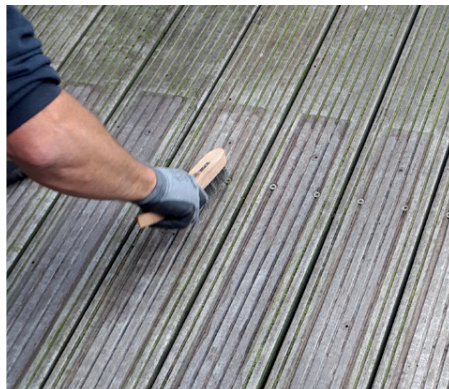
### Step 1: Preparation

Ensure that the surface to be treated is clean, free of grease and dust and that all moss and mold have been removed. This can cause a reaction between the PolyGrip Strips / Plates and the wood.

If applicable, remove green deposits with a wire brush.

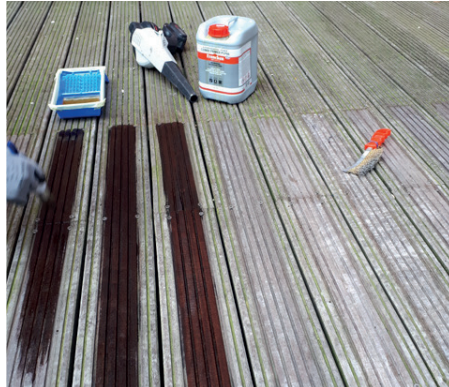
Remove the loosened deposit with an industrial vacuum cleaner or blow away.

All damaged and rotten boards must be replaced.



### Step 2: Pre-treatment surface

After removing any deposits, pre-treat the surface with Primer PUP60. Apply the primer with a brush or foam roller. Preferably apply Combi Primer PUP60 in two layers, the second layer being applied after complete drying of the first layer, but no longer than after 24 hours. After the primer has dried completely, the surface is pre-treated for gluing with 1K PU473.



### Step 3: Pre-treatment PolyGrip Strips / Plates



The non-slip grip plates to be glued must be clean, dry, dust and grease-free.

Therefore, clean it before installation with Remover 16 Spray.

Immediately after applying Remover 16 Spray, wipe it off in one direction with a clean cloth or cleaning paper.

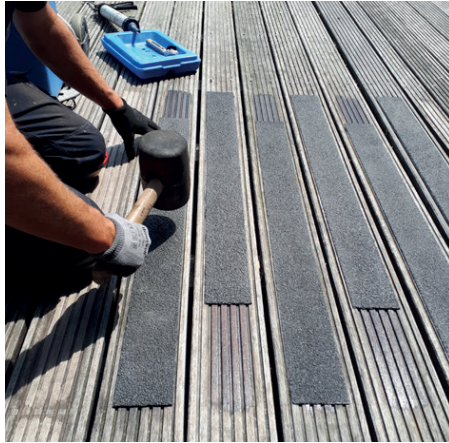
Replace cloth or cleaning paper in time – if necessary – to prevent any contamination from spreading on the substrate.

### Step 4: Apply glue to PolyGrip Strips / Plates

After pre-treating the anti-slip grip plate, apply 1K PU473. To prevent water infiltration along the sides and ends of the anti-slip grip plates, the glue is applied a few millimeters from the edges, parallel to the outer edges of the anti-slip grip plates, in a continuous glue groove. The remaining surface is provided with a hose-shaped adhesive bead to create sufficient adhesive surface.



## Step 5: Placing the PolyGrip Strips / Plates



After applying 1K PU473 to the non-slip grip plate, it is immediately placed on the dry primer layer.

Then tap the glued strip with a rubber hammer to ensure a good transfer of glue.

Check whether the installed anti-slip grip plates do not come out of the adhesive layer due to possible tension in the grip plate at the corners and / or along the sides.

If this happens, the glued anti-slip grip plate must be weighed until 1K PU473 is fully cured to prevent the glue connection from already being hardened and possibly (partially) broken.

Wet glue residues can be removed directly from surfaces and tools with Frencken Cleaning Wipes or Remover 16 Spray. Cured adhesive residues can be removed mechanically.

## Step 6: Screw on the PolyGrip Strips / Plates (optional)

On wooden surfaces you can choose to fix the PolyGrip Strips / Plates with screws if required.

The screws should not be tightened too tightly to prevent the Polygrip Strips / Plates from bulging. The drill holes must be larger than the diameter of the screw to accommodate the working of the wood.

If multiple PolyGrip Stair Treads need to be pre-drilled at the same place, it is advisable to create and use a template, so all drill holes will be covered. This will ensure a uniform appearance that is visually desirable on long straight sections. We recommend that you drill the holes from the smooth (inside) and start drilling at least 45 mm from the side and at any corner, subsequently along the edges where possible.

The kit can be lightly loaded after approximately four hours and is fully accessible after twelve hours.

## 6. MOUNTING ON CONCRETE AND SAND CEMENT FLOORS



We recommend fixing PolyGrip Strips / Plates on concrete and sand-cement floors with a polyurethane-based kit such as PU473 and primer available at GripFactory.

### Tools:

- Kit syringe
- Cotton cloth
- Rubber hammer
- Paint tray
- Foam or lambskin roller
- Industrial vacuum cleaner
- Remover 16 Spray / degreaser (approx. 7,5 m<sup>2</sup> per 500 ml)
- PU473 kit (approx. 1000 ml/m<sup>2</sup>)
- PUP60 primer (approx. 300 gram/m<sup>2</sup>)

Where possible, it is advisable to have the PolyGrip Strips / Plates acclimatized to the weather conditions prior to application.

### Step 1: Preparation

1K PU473 must be applied on a pressure-resistant, dimensionally stable, clean, permanently dry and dust-free and grease-free surface on which there are no loose layers, paint, wax, oil or other contaminants.

Carefully clean concrete and sand-cement floors prior to bonding with, for example, an industrial vacuum cleaner. Irregularities such as eg equalization, old glue residues and the like can adversely affect the adhesion. These should preferably be mechanically removed by sanding or blasting. Surfaces of concrete substrates that are not strong enough should preferably be removed.

### Step 2: Pre-treatment surface

After checking and cleaning the substrate, apply Combi Primer PUP60 undiluted and evenly using a foam or lambskin roller. To prevent puddles, do not pour the primer onto the substrate.

For highly porous and highly absorbent surfaces, it is recommended to apply a second layer. Apply this second layer after complete drying of the first layer, but no longer than after 24 hours.

### Step 3: Pre-treatment PolyGrip Strips / Plates

The non-slip grip plates to be glued must be clean, dry, dust and grease-free. Therefore, clean it before installation with Remover 16 Spray. Immediately after applying Remover 16 Spray, wipe it in one direction with a clean cloth or cleaning paper. Replace cloth or cleaning paper in time - if necessary - to prevent any contamination from spreading on the substrate.

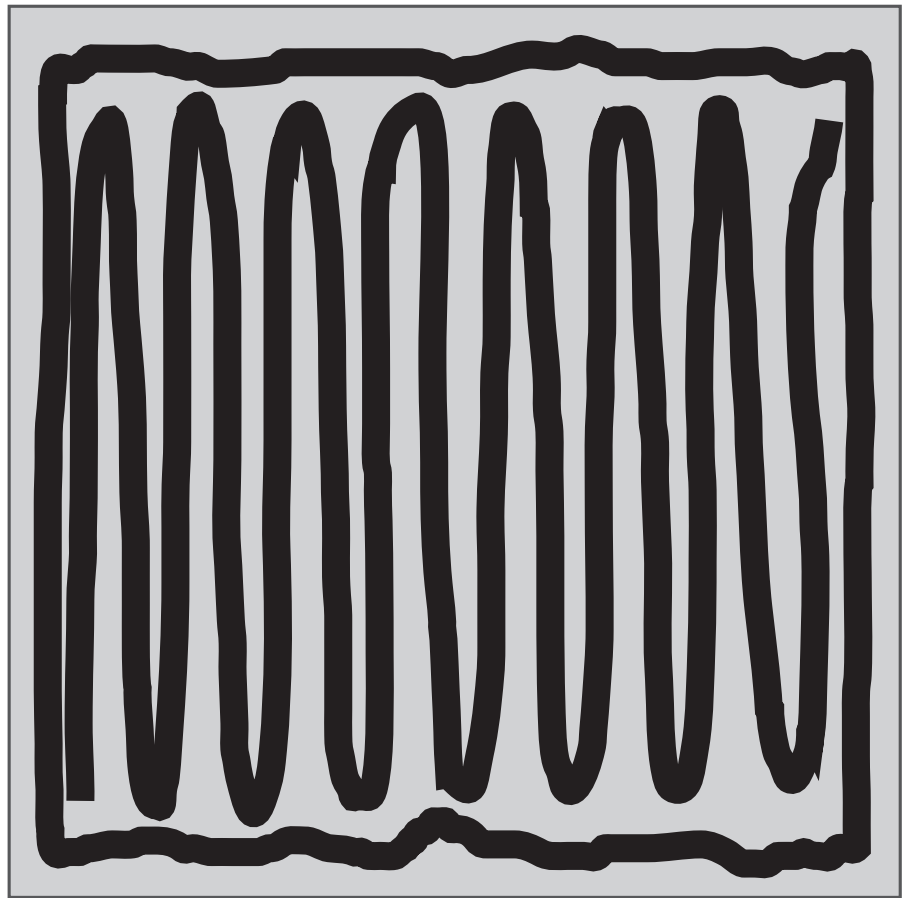
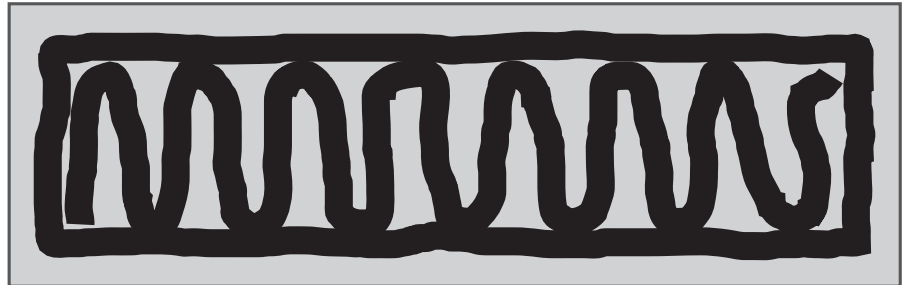
TIP: Bestaande keramische tegelvloeren of vloeren van marmer, terrazo etc. voorafgaand aan verlijming goed reinigen met bijv. Natronloog oplossing of een ander geschikt reinigingsmiddel. Aansluitend spoelen met zuiver water. Wacht met verlijmen totdat de vloer volledig droog is.



#### Step 4: Apply glue to PolyGrip Strips / Plates

After the primer has dried completely, the surface is pre-treated for gluing with 1K PU473. If Combi Primer PUP60 is used as a moisture barrier on cement-bonded floors with a residual moisture percentage of up to 4%, a minimum of 2 layers must be applied. Apply the second layer crosswise to the first layer and ensure that each layer forms a closed film. Surfaces with a residual moisture percentage of up to 7% or where capillary rising moisture occurs can be treated with Frencken 2 Block primer after technical advice.

#### SUGGESTED GLUE PATTERNS



Start approximately 20 mm from the edges of the PolyGrip Strips / Plates. Completely complete closing.

## 7. MOUNTING ON STEEL / METAL



We recommend to attach PolyGrip Strips / Plates to metal floors with a polyurethane-based kit such as PU473 and Surface Activator available at GripFactory.

### Tools:

- Kit syringe
- Cotton cloth
- Rubber hammer
- Industrial vacuum cleaner
- Frencken Surface Activator
- PU473 kit (approx. 1000 ml/m<sup>2</sup>)

Where possible, it is advisable to have the PolyGrip Strips / Plates acclimatized to the weather conditions prior to application.

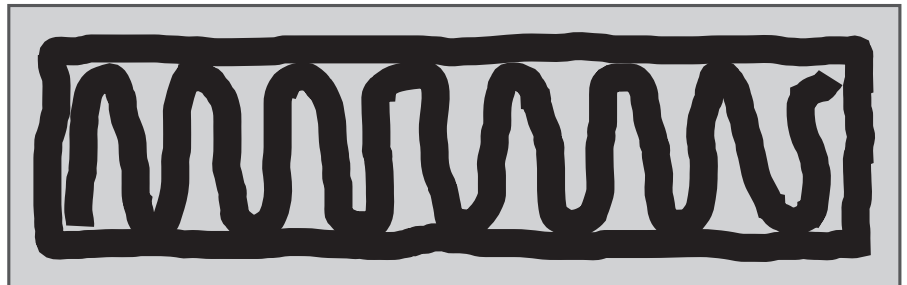
When gluing to non-porous materials such as (powder-coated) metals, the use of Frencken Surface Activator is recommended.

Apply Surface Activator with a cloth soaked in product according to the wipe on wipe off method, always working in one direction. Always use a clean cloth or cleaning paper to prevent contamination of the surface.

Replace cloth or cleaning paper in time – if necessary – to prevent any contamination from spreading on the substrate.

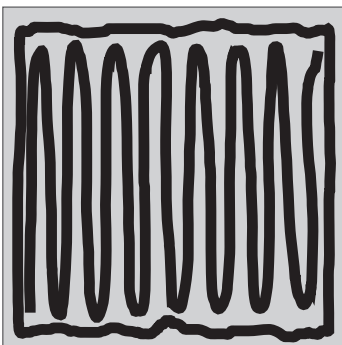
After cleaning, allow the surface to dry sufficiently before applying the glue ( $\pm$  5 minutes). The bonding must be done within 8 hours after applying the Surface Activator.

### SUGGESTED GLUE PATTERN



Start approximately 20 mm from the edges of the PolyGrip Strips / Plates. Completely complete closing.

*Example large area*



### GRIPFACTORY APPLICATION SERVICE

Are you unable to find a solution or do you have questions? Then contact the GripFactory Service Desk (+31 348 -20 3000). For an additional cost you can have GripFactory PolyGrip products applied by a certified applicator.